

IMPORTANT!

Before you begin

You will need:

- Belkin VoIP unit
- Power cable
- Network cable

Hardware check:

- Your computer is switched on
- The VoIP unit is switched on (power switch at rear)
- Network cable connected from computer to the VoIP unit

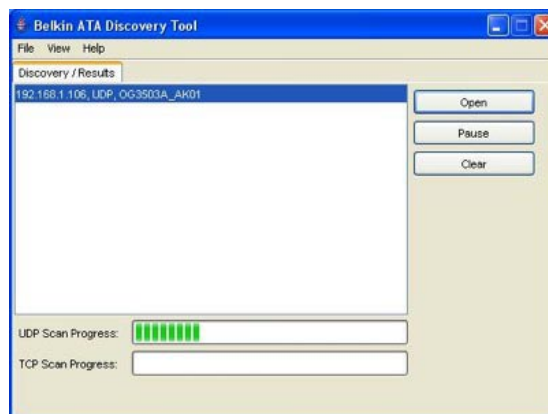


F1PG200ENau

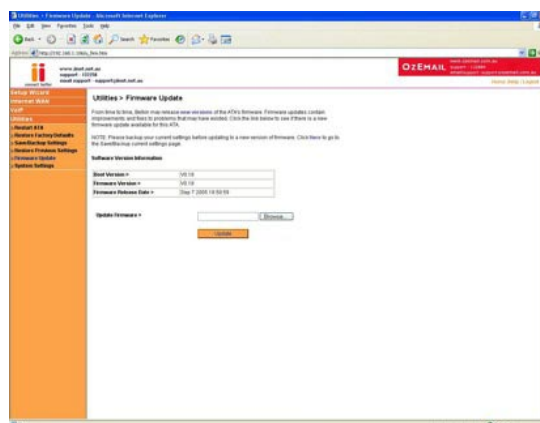
Upgrade the firmware on your Belkin ATA

This process may take up to 1-2 minutes

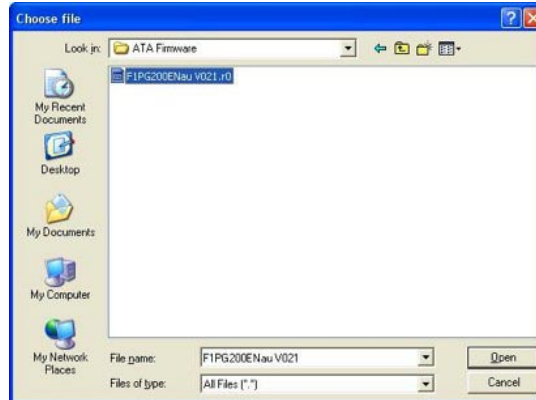
- Step 1 Open the ATA Discovery Tool (located on CD provided with ATA)
- Step 2 The Discovery Tool should find the ATA, highlight the listing then click **Open**



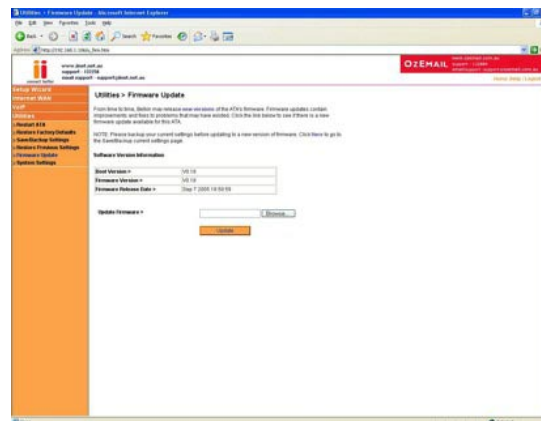
- Step 3 The Login page should appear. Type in your current password (default password = admin) then click **LOGIN**
- Step 4 On the left hand side of the screen click **Advanced Setup**
- Step 5 You will now be presented with more options in the menu on the left. Click **Utilities** then choose **Firmware Update**



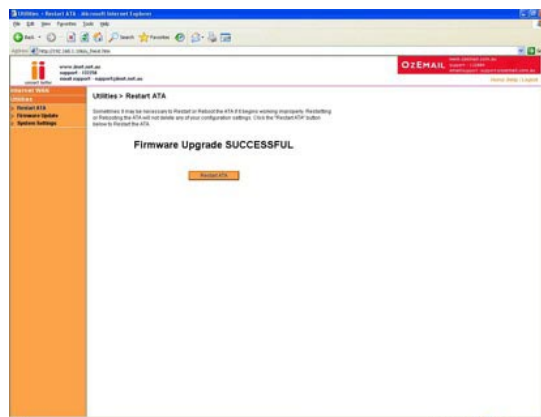
- Step 6 Click the browse button, located in the centre of the screen
- Step 7 You will now be presented to browse for the file downloaded earlier in step two. Browse to the file and click **Open**



Step 8 Click **Update**, two warnings will now appear, click **OK** on each



Step 9 Once the Firmware Update process has completed, you will need to restart the ATA by clicking the **Restart ATA** button



Status

Version Info

Firmware Version	V0.21
Boot Version	V0.18
Hardware	01
Serial Number	J543009140

Phone Information

Phone Number 1
Phone Number 2
Last Number 1 Dialed
Last Number 1 Received
Last Number 2 Dialed
Last Number 2 Received

Internet Settings

WAN MAC address	00:12:8F:12:83:E6
Subnet mask	255.255.255.0
WAN IP	192.168.1.106
Default gateway	192.168.1.1
Primary DNS Address	61.68.88.88
Secondary DNS Address	10.1.1.1
Date and Time	NTP Time Not Available

SIP Register Log: